

GLAS

A Quick and Easy Referral Pathway



from GPs to
Psychiatrists for Mental Health and Perinatal Mental Health
Patients

'One-Off Assessments'

Item 291 assessments are for patients you choose to manage in your practice

General practice Liaison and Assessment Service (GLAS) provides a single 'point of entry' making referral to a consultant Psychiatrist simple and expedient for General Practitioners.

Private Psychiatrists based at Belmont Private Hospital offer appointments for MBS Item 291 (one-off) assessments through GLAS, a service jointly supported by Belmont Private Hospital and Brisbane South Division of General Practice

GLAS Inclusion Criteria for Suitability

CRITERIA QUESTION	INCLUSION ANSWER
1) Is your Patient in a crisis situation?	NO
2) Will you be responsible for the continuing care of the patient?	YES
3) Is a one-off assessment and management plan appropriate support for your care of the patient?	YES
4) Do you require the assessment for a third party? (eg: court, Work Cover, superannuation)	NO
5) Are there any risk factors that would make attendance by this patient at private psychiatric rooms inappropriate?	NO

Item 291 Forms

Item 291 Forms can be found and downloaded from the BSDGP website at www.bsdgp.com.au

From the front page of the website, go to 'Resources' then 'Mental Health' and then to the 'GLAS' Folder

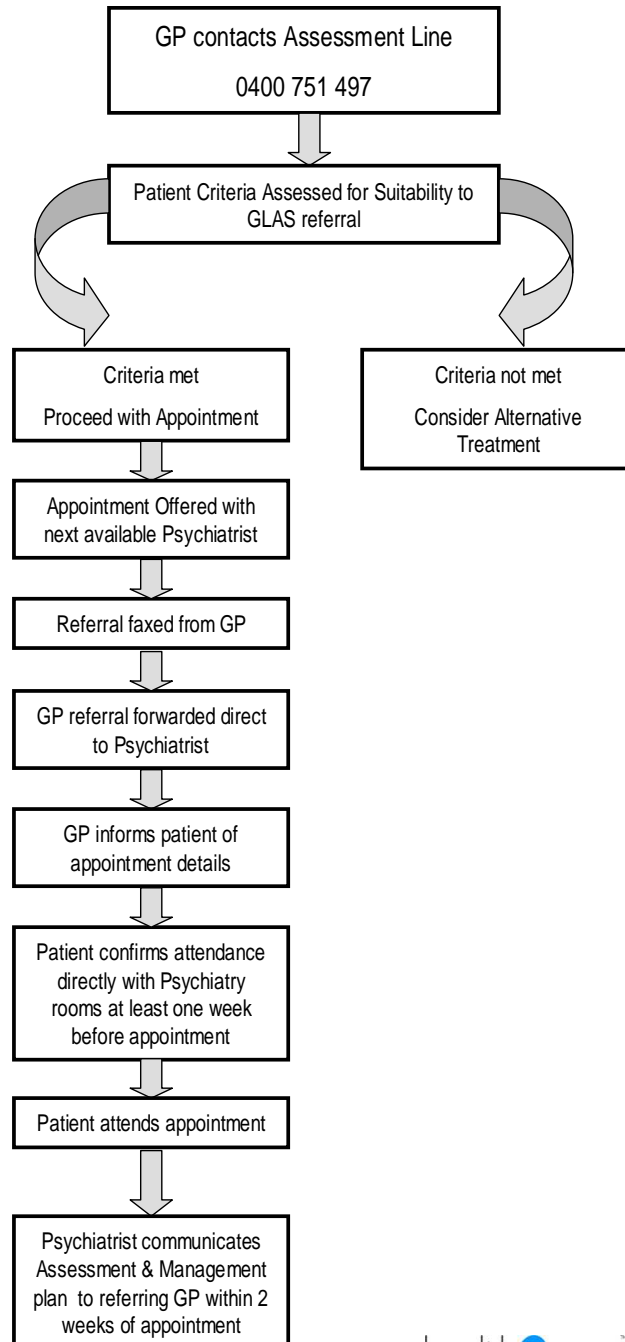
For GLAS Referral Flowchart see next page

Contact Information

- Ring 0400 751 497
- Monday – Friday
- 9:00am – 3:00pm
- If after hours leave a message for response within 1 working day
- Fax item 291 forms or referral letters to 3398 0277

GLAS Referral Flowchart

General Practice Liaison & Assessment Service Referral Flow Chart



Contact Information

- Ring 0400 751 497
- Monday to Friday
- 9:00am – 3:00 pm
- If after hours leave a message for response within 1 working day
- Fax item 291 forms or referral letters to 3398 0277

