



Chiropractic
Dental
Medical
Nursing and Midwifery
Optometry

Osteopathy
Pharmacy
Physiotherapy
Podiatry
Psychology

23 April 2010

AHPRA: Frequently Asked Questions

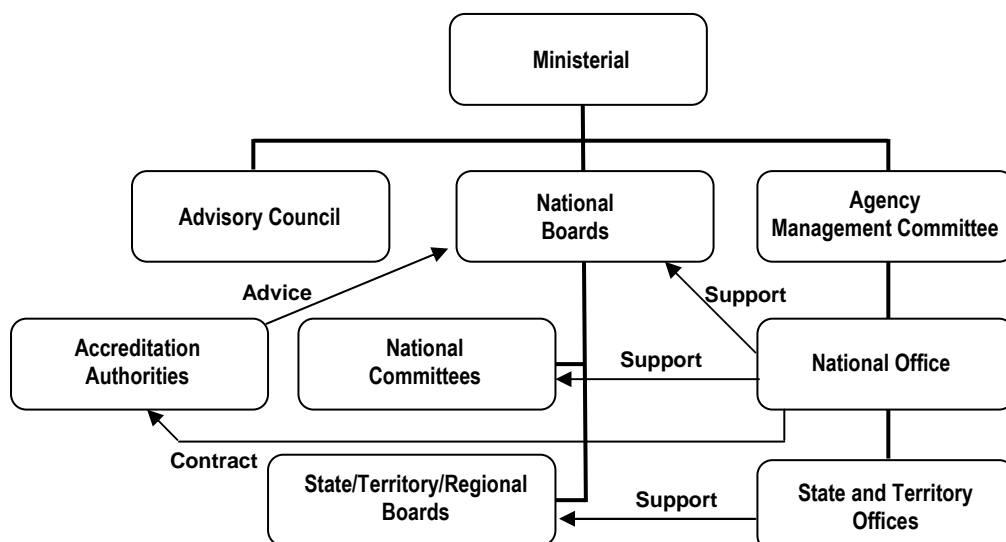
About the national scheme

1. What does AHPRA stand for?

AHPRA is the Australian Health Practitioners Regulation Agency. It is the organisation that will support the introduction of national registration for 10 health professions from 1 July 2010.

2. What is the National Registration and Accreditation Scheme?

In March 2008 the Council of Australian Governments (COAG) decided to establish a single national registration and accreditation system for 10 health professions, for introduction on 1 July 2010. There is a national board for each profession. There is a single Agency (AHPRA) supporting the boards and the implementation of the national scheme. AHPRA will have an office in the capital city of each State and Territory. The AHPRA head office is in Melbourne. This chart shows the structure of the national scheme. Also go to www.ahpra.gov.au for more information.



3. When does the national scheme start?

The National Registration and Accreditation Scheme begins on 1 July 2010.

4. Which professions will be included in the national scheme?

On 1 July 2010, the following 10 professions will be registered with the national scheme:

- chiropractors
- dental practitioners (including dentists, dental hygienists, dental prosthetists & dental therapists),
- medical practitioners
- nurses and midwives
- optometrists
- osteopaths
- pharmacists
- physiotherapists
- podiatrists
- psychologists

On 1 July 2012, the following four health professions will be included in the national scheme:

- Aboriginal and Torres Strait Islander health practitioners
- Chinese medicine practitioners
- medical radiation practitioners
- occupational therapists

How do I register with the National Board?

5. If I am registered now, will I be registered with the national scheme?

Every practitioner who is registered with a state or territory registration board on 30 June 2010 will automatically transition to the national scheme. They will be registered with the national scheme until the end-date of their renewed registration.

6. What do I have to do to register with the national scheme?

Nothing. If you are registered at 30 June you will automatically transition into the new scheme and your registration will be valid until the end date of your registration. If you have just renewed your registration with your current board, you will be registered with the national scheme until the end of that registration period. If your current registration is due on 1 July or soon after and you do not renew your registration with your current Board before 30 June, you will be registered with the National Board only until the end-date of your current registration. After that date you will not be registered unless you renew your registration after 1 July with the National Board.

7. What if I am registered in more than one state?

Your registration record with the national board will be a combination of your records in all the States and Territories in which you are registered. There is a process in place to resolve these issues and to help make sure that the information the national boards start with is accurate and up to date. Follow the instructions in the letter you receive in April carefully. More detail about this process will also be published on this website later in April.

Registration Types post 1 July 2010

8. What type of registration will I have in the national scheme?

Your registration type may change in the transition to the national scheme. You will receive a letter in April detailing your current registration type, and indicating what your type of registration will be in the new scheme. There will be a process in place to correct any inaccurate information.

National Boards have published on their website 'Registration Transition Matrices' that detail how different types of registration in different professions and in different States and Territories will transition under the national scheme. These reflect the Registration Standards which have been approved by the Ministerial Council.

9. What if my registration type changes between April and July?

All existing Boards will be sending their complete register to AHPRA on 30 June 2010. This data will directly transfer to the new national register for each profession from 1 July 2010. The information held about your current registration status by your current state or territory registration Board will transfer to the national scheme.

Registration Renewals

10. My registration is due for renewal before 1 July 2010 – what do I do?

Existing registration boards will manage all renewals processed before 30 June 2010. If you renew your registration with your current board before 30 June you will automatically transition to the national scheme and be registered until the end of the registration period. You will not have to renew your registration with the national board until the end of your registration period.

If your renewal is due but is not processed by 30 June you may not be eligible for automatic transition to the new scheme, and may need to reapply for registration. All registration renewals processed after 1 July will be managed by AHPRA under the new registration standards.

If your registration is due on or shortly after 1 July and you do **not** renew your registration with your current board before 30 June, you will only be registered with the national board until the end-date of your current registration. To renew your registration with the National Board you will need to meet the new registration standards. These are detailed on the National Board website.

11. What if my registration renewal is due after 1 July 2010?

If your renewal is due near to 1 July 2010, your current board will encourage you to renew early so that you transition safely to the new national scheme. However, if you are renewing after 1 July 2010 you will need to renew in the national scheme and meet the new registration standards.

12. What if my registration renewal is due in July – will my current board send me a reminder? Will AHPRA be ready to renew my registration?

Transition arrangements are in place to support the safe transition of registrants into the national scheme. Current Boards will send you registration renewal reminders to encourage you to renew early and will process all applications received before 30 June 2010. AHPRA will process all applications received after 1 July 2010 under the new registration standards.

13. How do I renew my registration under the national scheme?

Details of the registration renewal process under the national scheme will be published before the introduction of the national scheme. You will be sent a reminder when your registration is due. You will be able to renew online.

General

14. What if I change my address between April and July?

All registrants are encouraged to make sure the contact details held by their current registration board are up to date before 30 June 2010. The contact details held by existing registration Boards on 30 June 2010 will transfer to AHPRA.

15. What will my national registration fee be?

National Boards are in the process of budget planning and are in the process of setting registration renewal fees. The Agency will formally announce the new national registration fee in June.

16. How will I find out what my new registration number is?

In July 2010, AHPRA will send you your new national registration number, your national registration certificate and the date you should renew your registration.

Want to check for the latest information?

Up to date information about AHPRA and the national registration and accreditation scheme will be published on the website www.ahpra.gov.au